

# Model 101 Tablet Feeder



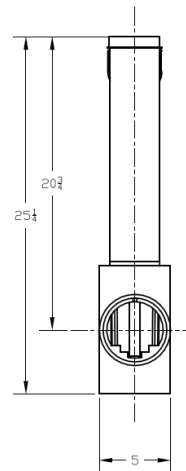
The Model 101 tablet feeder is a compact, economical alternative to other tablet feed devices. Designed and tested to NSF/ANSI Standard 46, the Model 101 is rated for 1500 gallons per day when used with Accu-Tab<sup>®</sup> Wastewater tablets.

Dosing is controlled entirely by the rate of flow through the device. Flow control weirs in the tablet feeder control the depth of the water in the device and the amount of chemicals in contact with the flow. There are no moving or electrical parts that require maintenance.

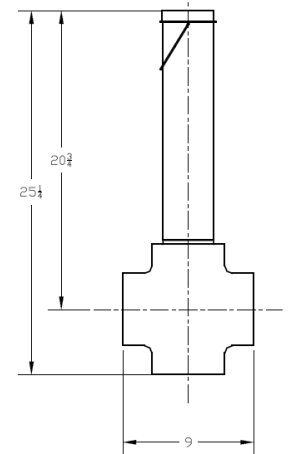
The functional portion of the Model 101 is housed within a standard pipe fitting. This allows a small overall footprint and easy connections to system pipes. For installations where a contact chamber is not required, the Model 101 can be installed in line with the pipe with no additional fall through the device.

Parameter	Units	Value
Minimum Capacity	GPD	500
Maximum Capacity	GPD	1500
Connections (SCH 40 PVC)	in (cm)	4 (10.16)
Overall Width	in (cm)	5 (12.7)
Overall Height	in (cm)	26 (66.04)
Overall Length	in (cm)	9 (22.86)
Recommended Chlorine	tablet	Accu-Tab <sup>®</sup> Wastewater

Side View



Front View



Top View

